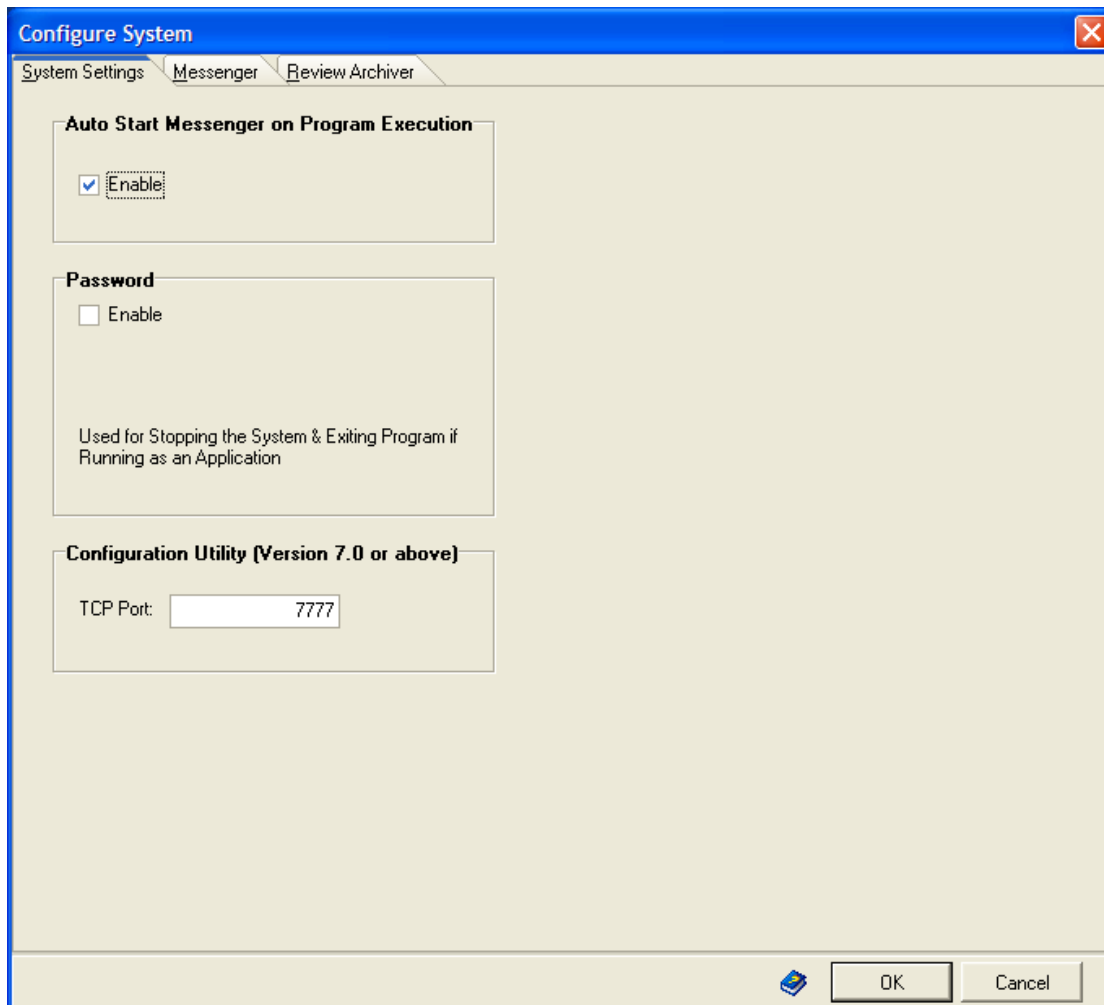


PSD Messenger Pro Version 7

Installing PSD Messenger Pro on MS Windows 7 or MS Server 2008

1. Run the installation program to install PSD Messenger Pro.
2. Browse and execute;
c:\program files\PSDMessengerPro\PSDMessenger.exe.
Run as administrator and if necessary XP SP2 mode.
3. Configure all the interface settings for incoming and outgoing communications.
4. TCP Port 7777 is used to communication to the PSD Messenger Pro Configuration Utility. Make sure this is not blocked by a firewall or change the TCP port number, if required, see below.



5. Select File\Install as NT Service.
6. Close the PSD Messenger Pro application.
7. Go into services and START the PSDMessenger service.
8. If changes to the interfacing settings are required, the PSDMessenger service must be stopped and the c:\program files\PSDMessengerPro\PSDMessenger.exe application must be executed.
9. To make message type, user, group and automatic test message changes select the program; "PSD Messenger Pro Configuration Utility" from the PSD Applications program group. See below.

PSD Messenger Pro Configuration Utility

- Connects to the PSD Messenger Pro service and allows message type parameters to be altered.
- Incoming data, messenger queue and outgoing data are received from the service to assist in configuration and testing.

PSD Messenger Pro Configuration Utility 7.5

Connected to Messenger Pro Service: 0 OK

Messenger Config Incoming Data Queue Outgoing Data

Process Incoming Data Ignore Incoming Data Time Zones Automatic Test Groups Users

Message Types: No. Message Types = 0

Send Message On

If RS232 Event: Ref: [] Contains: [] Not Contains: []

If OPC Event: Event Contains: [] Alarm:
 Event Source: [] Active: []

Event\Alarm Priority (=0 - don't care): [] Alarm State: []

Message Priority (99 - highest, 0 - Lowest): [] Message Priority = Incoming Event\Alarm Priority

Send the Whole Line Else This Message: []

Send Message to Pager\Phone\Email

Destination []

Plus Include (Insert using <n>)

<1> Part of Line in Location, from, to
[] []

<2> Part of Line Bounded by
[] []

<3> Part of Line, Field No, Field Separator
[] []

Also Send to ID Found in

Part of Line in Location, from, to
[] []

Part of Line Bounded by
[] []

Part of Line, Field No, Field Separator
[] []